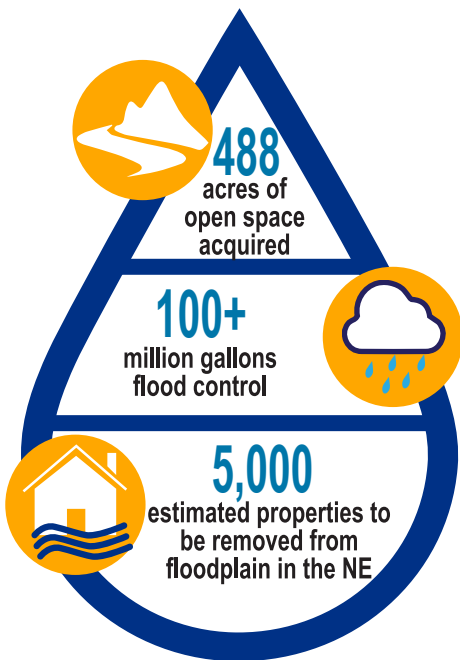




65 

MILLION GALLONS
Pond Capacity Created
for Flood Control
**Reduced Flooding
in Central El Paso**



El Paso Water's fiscal year 2018-19 stormwater budget will fund operations, maintenance and flood control projects. The Public Service Board will be asked to adopt the stormwater budget following a public hearing at its January 10, 2018, meeting. The fiscal year begins March 1, 2018.

El Paso Water is proposing an 8 cent increase to the average residential household's monthly bill – which translates into a 2 percent increase to the monthly stormwater fee. The increase is far below the forecasted 9 percent increase under the utility's 5-year plan. The reduction was enabled by a reprioritization of some projects and operational efficiencies.



New projects to further reduce flood risks are funded in 2018-19 budget

- El Paso Water proposes a \$51.1 million stormwater budget to allow for improvements and maintenance.
- \$3.3 million is set aside to fund additional land acquisition to move forward with the Will Ruth Stormwater Pond in northeast El Paso.
- The \$1.6 million Silver Springs Dam project will improve flood control in west El Paso.
- Thomas Manor stormwater improvements, estimated at \$4.3 million.



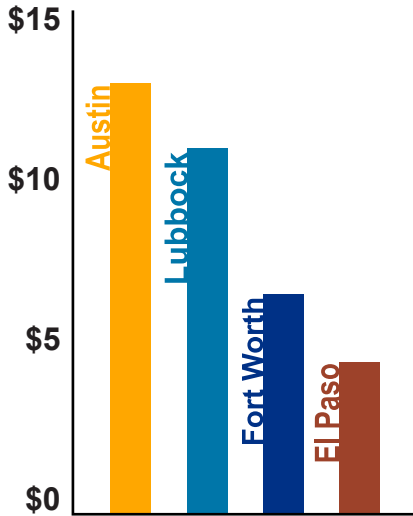
We are delivering results; the dollars we spend make a difference

- Completed projects have significantly reduced flooding in many areas of El Paso. For example, six new ponds capture and store 65 million gallons of stormwater flows in central El Paso that help reduce flooding on I-10.
- The Fairbanks project in northeast El Paso will slow the unsafe speed of stormwater runoff from the Franklin Mountains and divert debris, cutting the cost of recurring street cleaning after heavy rains.
- EPWater purchased and preserved several open space areas for preservation. This trend will continue and these vital natural systems will function to control runoff.
- New equipment purchased for operations crews is safer and has increased efficiency, enabling the in-sourcing of some maintenance and repair projects that further saves on costs.

epwu.org



Residential Stormwater Fee Comparison



NOTE: Average residential fee based on a typical EPWater square footage between 1,200 to 3,000 impervious area.



Public safety is a key driver in stormwater planning

- EPWater prioritizes projects that reduce flood risk in high-traffic areas and have the potential to protect public safety and private property.
- Crews work throughout the year to ensure that the system operates properly.
- In 2017, crews cleaned 616 storm drain inlets, 25 miles of channels and levees and 3 miles of conduits.
- Crews maintained 243 acres of ponds and 15 miles of drains.



Residential	Current Fee	Proposed Fee (2% Increase)	Monthly Increase
Small	\$2.09	\$2.13	\$0.04
Typical	\$4.17	\$4.25	\$0.08
Large	\$8.34	\$8.51	\$0.17

Example Proposed Monthly Fee Non-Residential Customer



	Current Fee	Proposed Increase (2%)
Fast Food Restaurant	\$23.64	\$24.11
Car Dealership	\$374.14	\$381.63